



The Zlatnik is a traditional and elegant 4 star hotel governed by a personal sense of style. Situated in the residential area of Zemun in a privileged location **15 minutes drive from the City Center and the Airport** and **15 minutes walking distance from the Danube** and its lively quays. The Zlatnik welcomes you in its 37 comfortable rooms all fully equipped.



**Serbia , 11080 Belgrade, Dobanovacka 95**  
GPS Info: Latitude 44.84884850956529 Longitude 20.3930014371872

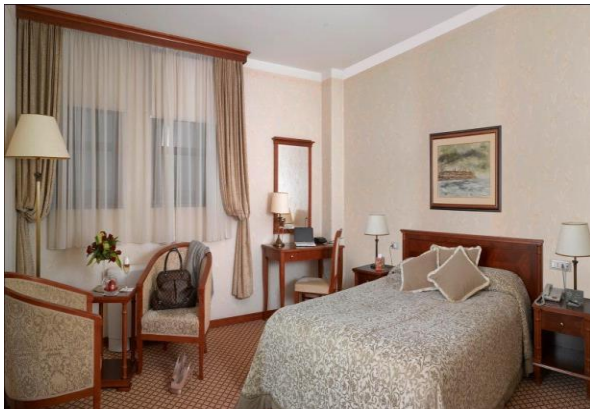


CLASSIC room at the corporate rate of **75 € (rack rate 105 € )** included B&B and Tax  
Queen bed or two separate beds

**10 euro** extra charge for the second person in the same room with breakfast

Weekend rates will be offered at the best available price.

**FREE:** wireless internet, garage



**CLASSIC ROOM 75 €**



**SUPERIOR ROOM 85 €**



**DELUXE ROOM 95 €**



★★★★★

## DISTANCE AIRPORT - HOTEL ZLATNIK



Get directions My places

Car Pedestrian

A Aerodrom Parking, Nikola Tesla Airport, Surčin  
B Hotel Zlatnik, Dobanovačka, Belgrade

Add Destination - Show options

**GET DIRECTIONS**

Suggested routes

E-70	<b>12.5 km, 13 mins</b>
E-70 and Tošin bunar/Тошин бунар	15.5 km, 16 mins

**Driving directions to Zlatnik Hotel Belgrade**

A Aerodrom Parking  
Beograd 59 AERODROM BEOGRAD, 11271, Surčin, Grad Beograd

- Head toward Route 226 southwest on Unknown road
- Take the 2nd right onto Route 226  
Pass by Airport Garage (on the right)
- Keep right at the fork and merge onto E-70
- Take the exit

**Serbia, 11080 Belgrade, Dobanovacka 95**

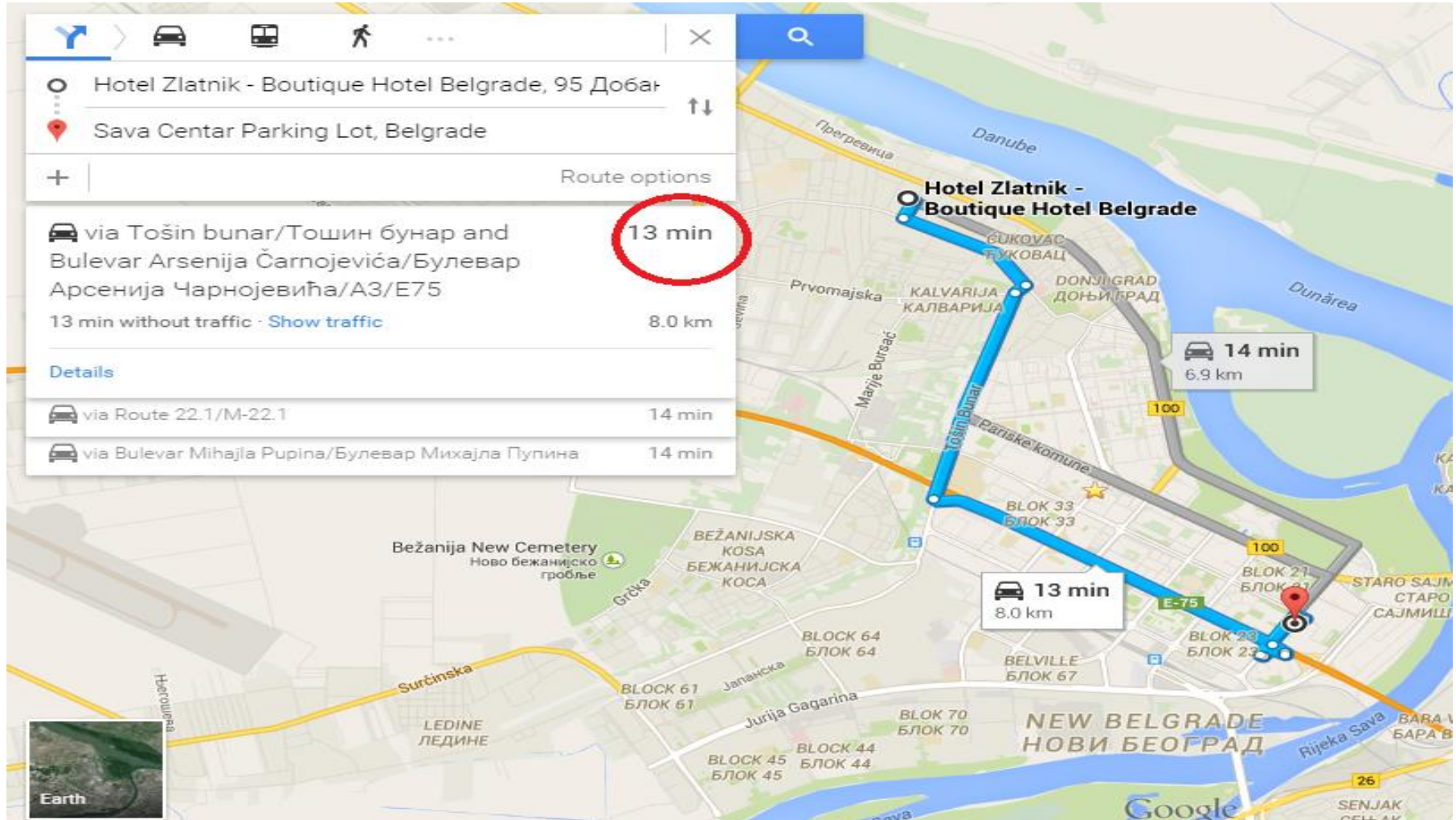
GPS Info: Latitude 44.84884850956529 Longitude 20.3930014371872





★★★★★

## DISTANCE CENTER SAVA- HOTEL ZLATNIK



**Serbia, 11080 Belgrade, Dobanovacka 95**  
GPS Info: Latitude 44.84884850956529 Longitude 20.3930014371872



**HOTEL ZLATNIK**

**RESERVATIONS :**

**+381 11 31 67 515**

**E-MAIL:**

**OFFICE@HOTELZLATNIK.COM**

**Serbia , 11080 Belgrade, Dobanovacka 95**